

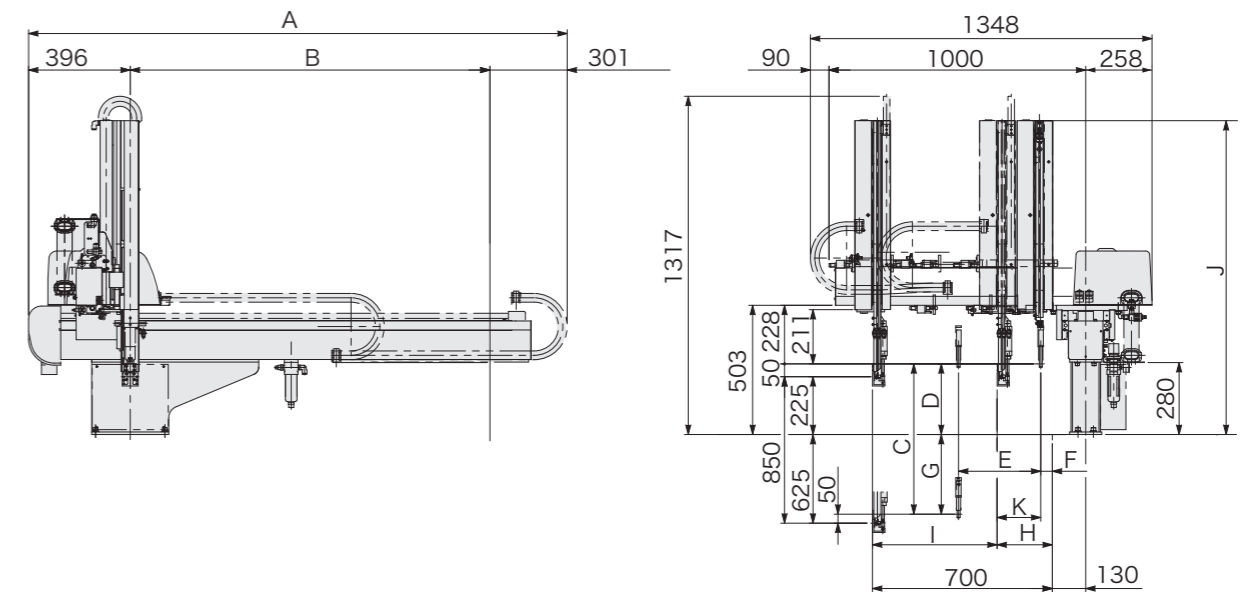
Separate catalog available

ATC II -150S/D

Cost-efficient model that supports limited-changeover molding, long-distance transport, and low clearance



- Clamping force 50 - 220tf
- Standard
- Low posture (Double speed mechanism)
- Servo + Air-driven



(mm)

Model	A	B	C	D	E	F	G	H	I	J	K
ATCII-150S	(1696) 2096 (2396) (2596)	(1000) 1400 (1700) (1900)	—	—	—	—	—	80	620	—	—
ATCII-150D			850	275	320	45	575	215	485	1222	170

() : Modified stroke

Hybrid Robot with Outstanding Cost Efficiency and Low-Profile Design

The ATCII-150 is a low-profile, single-axis servo-driven type take-out robot that adapts to low-clearance plants. These cost-efficient models are designed to suit small molding machines with a clamping force of 50 to 220 tf. The lightweight handheld GII B-type controller comes with the robot as a standard feature.

Standard Specifications

Power supply	Drive method	Controller model	Working air pressure	Flip angle
200/220 VAC (50/60 Hz) Single phase	Digital servo motor (1-axis) air cylinder (Max. 4-axis)	GII B-type controller	0.49MPa	90°

Model	Power consumption	Traverse stroke (mm)	Kick stroke (mm)		Vertical stroke (mm)		Air consumption (NL/cycle)	Payload (kg)	Target IMM clamp capacity (tf)
			Main arm	Sub arm	Main arm	Sub arm			
ATCII-150S	0.6 kVA 200 VAC 3.0 A	(1000) 1400 (1700) (1900)	150	—	850	—	17	3	50-220
ATCII-150D		100		850		22			

S type : Robot is equipped with main arm only. D type : Robot is equipped with main arm and sub arm.

() : Modified stroke

Payload includes the end-of-arm tool.

Introducing our EXTRA catalog

Needs on the molding work floor

- Flexible handling of products
- Flexible cutting of products
- Round-the-clock operation and better labor saving
- Changeover improvement

Yushin has the solution for you.

[WEB](#)
[CATALOG YUSHIN](#)