

# Controllers

## E-touch II-K

■ Target Model

HSA / TSXA

IP44-compliant, durable model with large, highly visible monitor



- 10.4-inch display
- Weight: 1.4 kg
- Handheld controller + CPU box
- Two enable switches
- Servo ON button (CPU box side)
- Auto/Manual mode switching key (CPU box side)
- CF memory card
- LAN port

All-Axis Servo Driven Type

Single-Axis Servo Driven Type

Swing Type

Side Entry Type

For Vertical Molding Machine

Stock System

Product Series Guide P11

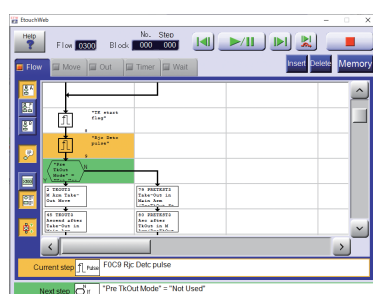
### 10.4-inch Big Screen

This controller features a big 10.4-inch display that contributes to good operability.



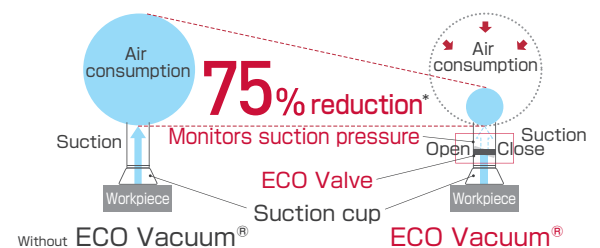
### Lead Through Teaching

Operators can add take-out robot motion while going through one-cycle operation of motion points and timers just like when teaching. This function gives operators the ability to add positions and teach motions to the robot.



### ECO Vacuum®

This function monitors the suction pressure, and when taking out a product, shuts off the suction circuit once the suction pressure has stabilized. By turning off suction while the contact surface is sealed by vacuum, suction can be maintained without using any air, which contributes to reduced air consumption.



\*Measured at Yushin during product testing

### Interpolated Motion

This function controls the arm motion so that when two or three axes are moved at the same time, the tip of the arm's trajectory is straight. This makes teaching gate cutting easy.