

Controllers

E-touch V

■ Target Model

FRA

Ergonomic design



- 8.4-inch display
- Weight: 1.5 kg
- Handheld controller
- Two enable switches
- Servo ON button
- Auto/Manual mode switching key
- SD card, USB flash drive
- LAN port

INTU LINE

INTU LINE displays production counts, uptime ratio, operation status, average molding cycle times, error counts, stoppage log, and production floor information in graphs and images on smartphones.



INTU LINE

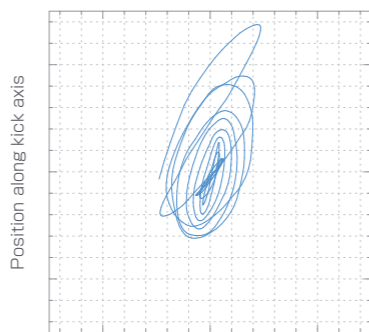


User

Active Vibration Control

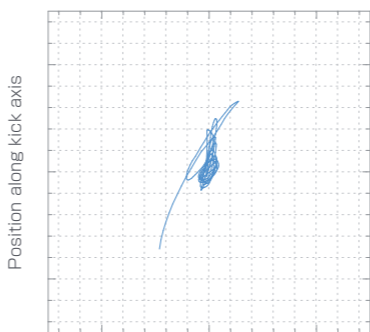
After sensing vibrations in the end-of-arm tool, this function analyzes the sensor signals and actively damps the vibrations.

Without Active Vibration Control



Position along traverse axis

With Active Vibration Control



Position along traverse axis

Arc Motion Control

Smooth seamless transition from one motion to another reduces both vibrations and cycle time.

► Motion trajectory (image)

Without Arc Motion Control

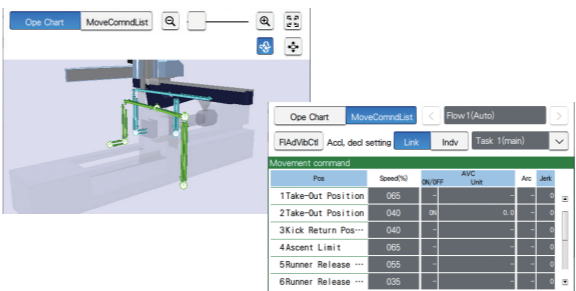


With Arc Motion Control



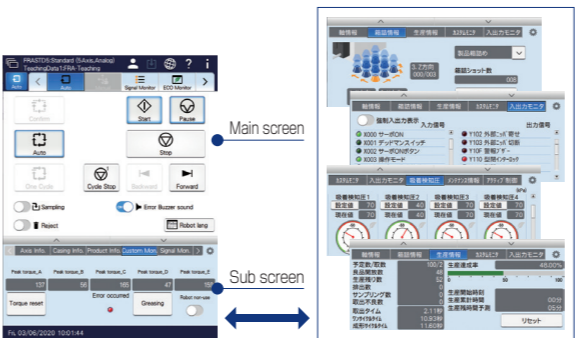
Motion Chart

Motion in progress is displayed with a 3D model and arrows for easy understanding. Teaching can be changed from the Chart screen. The list display lists motions in the order they are performed and allows the user to change teaching settings on a single screen for improved usability.



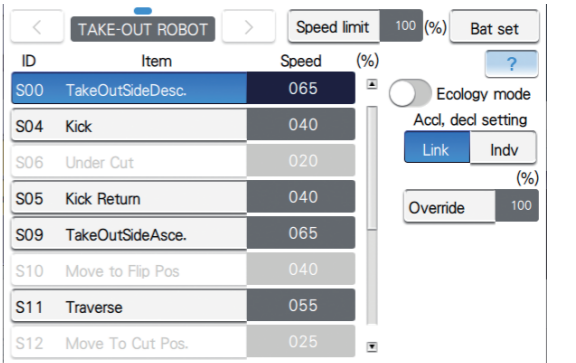
Vertical Dual Screen

The dual screen structure shows a main screen for robot operation and a sub screen for monitoring. It helps you monitor the information you need while operating the robot.



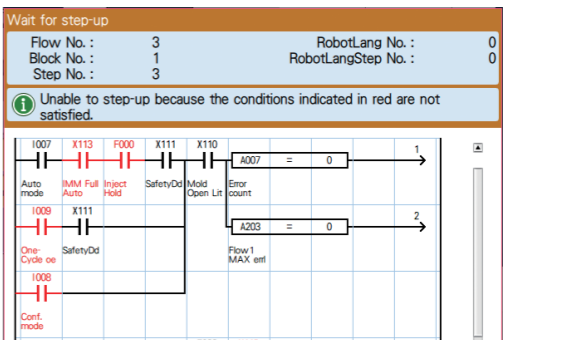
Speed Override

This function adjusts the speed of taught motions at specified ratios while maintaining the relative relationship. It is useful for checking operations.



Wait for Step-up

When the take-out robot is stopped for a certain period of time during auto operation, confirm operation, or moving to waiting position, the conditions that the robot is waiting for are indicated on the screen. This function is useful in identifying causes of stoppages when the robot has stopped in a waiting mode.



Custom Monitor

The user can lay out any information to their preference on the sub screen. By arranging buttons, the user can also create a screen that puts together certain operations. (Custom Monitor is created by Flexible Teaching.)

