

## HST-150S/D, HST-250S/D/DS

### ■ Features



100–300 tf



3/5-axis



Dual support type



Reduced overall height type



On robot body



E-touch II\*

\* Smaller E-touch compact II controller also available.

### Built Lighter & Faster

The shape and structure of most HST components were formed with design optimization technology for lighter weight. This innovation trimmed 72.5kg from the HST's moving components, 25.4% lighter than the previous RAIL- $\alpha$ -HS series model. The HST achieves 9.2% faster speeds than the RAIL- $\alpha$ -HS without a motor size increase.<sup>1</sup>

### Shorter Settling Times

Design Optimization + CFRP + Anti-Vibration Controls

The HST's extensive design optimization studied traits including natural oscillation and damping characteristics to dramatically improve vibration control. Settling time (time required for oscillations to calm down to within a set value) was reduced by 98.6%.<sup>2</sup>

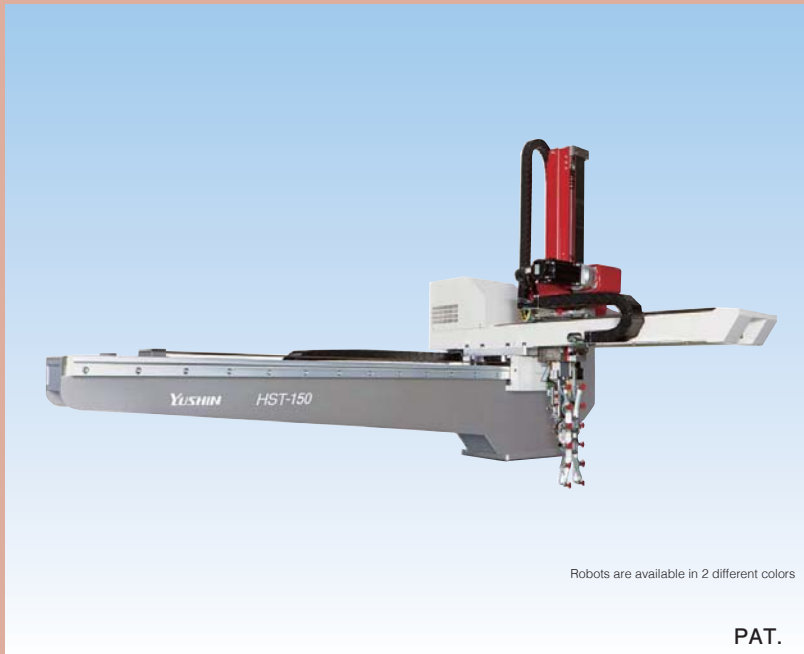
<sup>1</sup> Measured on the HST-400  
<sup>2</sup> Measured on the HST-150

### ■ Standard Specifications

Power source	Driving method	Control method	Air pressure	Wrist flip angle
3 phase AC200V/220V/230V (50/60Hz)	Digital servo motor 3/5-axis	Micro computer control	0.49MPa Maximum allowable air pressure (factory) 0.7MPa	90deg

Model	Power consumption	Traverse stroke (mm)	Kick stroke (mm)		Vertical stroke (mm)		Air consumption (NL/cycle)	Payload (kg)	Clamping force (tf)
			Main arm	Sub arm	Main arm	Sub arm			
HST-150S	3 phase AC200V 14.4 A Max.	1500 [1700] [1900] [2200] [2500]	550	—	850 [950] [1100] [1300]	—	3.6	3	100 ~ 220
HST-150D	3 phase AC200V 18.8 A Max.		415	415	850 [950] [1100] [1300]	850 [950] [1100] [1300]			
HST-250S	3 phase AC200V 17.3 A Max.		760	—	950 [1100] [1300]	—	4.3	5	
HST-250D	3 phase AC200V 23.1 A Max.		570	570		950 [1100] [1300]			
HST-250DS	3 phase AC200V 26.0 A Max.		720	720	—	—	8.4	—	

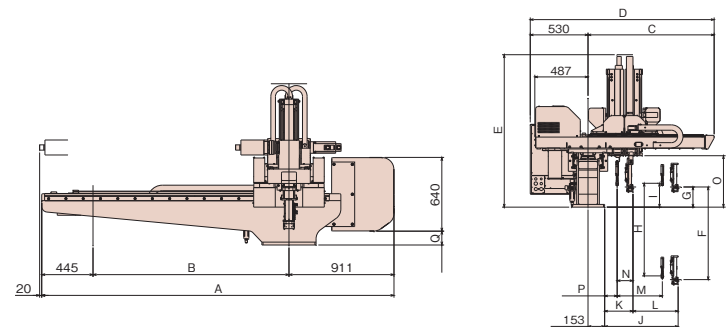
S type: Robot is equipped with product take-out arm only. D type: Robot is equipped with product take-out arm and runner take-out arm. DS type: Robot is equipped with 2 product take-out arms.  
[ ]: Modified traverse stroke  
Payload includes the end-of-arm tool.



Robots are available in 2 different colors

PAT.

### ■ Dimensions (mm)



型式	A	B	C	D	E	F	G	H	I	J	K	L	M	N	O	P	Q	
HST-150S					1321 [1374] [1454] [1546]	850 [950] [1100]	185	—	—		675	125	550	—	—	476	115	120
HST-150D	2856 [3056] [3256] [3856]	1500 [1700] [1900] [2500]		1158	1688	1339 [1452] [1532] [1624]	950 [1100]	850 [950] [1100] [1300]	219			260	415	415	145			
HST-250S								—	—			123	760	—	—			
HST-250D				1372	1902	1542 [1622] [1714]	950 [1100]	235	950 [1100] [1300]	270		313	570	570	202	566	111	185
HST-250DS				1522	2052				235	1033			720	720	249	64		

[ ]: Modified stroke