

Separate catalog available

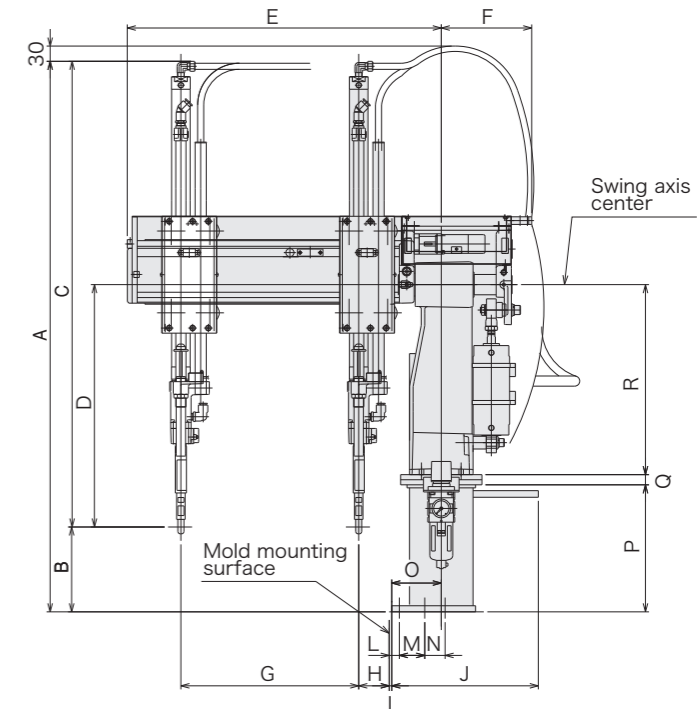
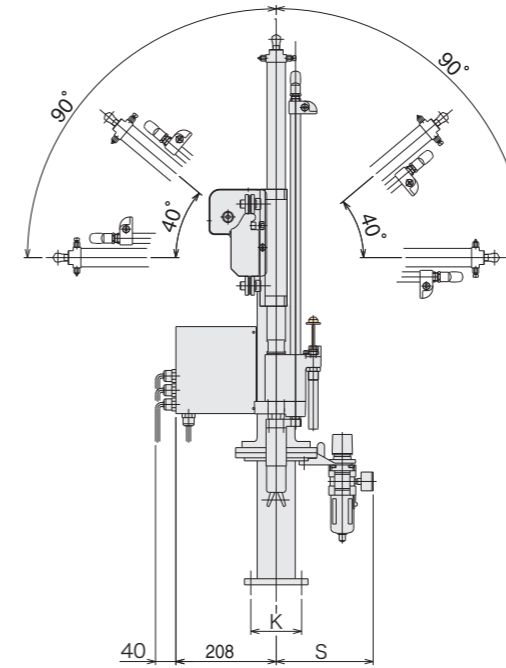
## N-HOP-G II 450/550/650/750/900

Servo motor-driven kick axis adopted to support frequent changeovers



Clamping force 30 - 350tf

Servo + Air-driven



### Runner Take-Out Robot with Servo Motor-Driven Kick Axis

Unique among Yushin's HOP series swing type take-out robots, the N-HOP-GII has a servo-powered kick axis for fast and stable take-out motions and extra versatility. The servo drive also allows for quick and accurate kick-stroke adjustment or instant settings recall through the GIIb-type controller, with no need to climb atop the molding machine to physically adjust settings. This advantage is especially helpful when operators must change molds and robot kick stroke frequently.

#### Standard Specifications

Power supply		Drive method		Controller model		Working air pressure		
200/220 VAC (50/60 Hz) Single phase		Digital servo motor (1-axis) Air cylinder (2-axis)		GIIb-type controller		0.49MPa		
Model	Power consumption	Stroke			Chuck position [mm]	Air consumption [NL/cycle]	Payload [kg]	Target IMM clamp capacity [tf]
		Vertical[mm]	Kick[mm]	Swing				
N-HOP-GII450	0.6 kVA 200 VAC 3.0 A	450	350	Min.50° Max.90°	Range 100	2	30-350	
N-HOP-GII550		550						
N-HOP-GII650		650						
N-HOP-GII750		750	620					
N-HOP-GII900		900						

X, XC, and XN Specifications are available. Payload includes the end-of-arm tool.

[mm]

Model	A	B	C	D	E	F	G	H	I	J	K	L	M	N	O	P	Q	R	S
N-HOP-GII450	1084		917																
N-HOP-GII550	1184	167	1017		586		350		5	289	100	20	50	40	98	250			197
N-HOP-GII650	1284		1117	477		178		60									20	374	
N-HOP-GII750	1484		1217																
N-HOP-GII900	1634	267	1367		856		620		4	400	128	25	60	60	99	350			222

N-HOP-G II 450/550/650/750/900

Swing Type