

# 1 All-Axis Servo Driven Type Take-Out Robot

SAII-1000S/D, SAII-1300S/D

Separate catalog available

All-Axis  
Servo Driven  
Type

Swing Type

Side Entry  
Type

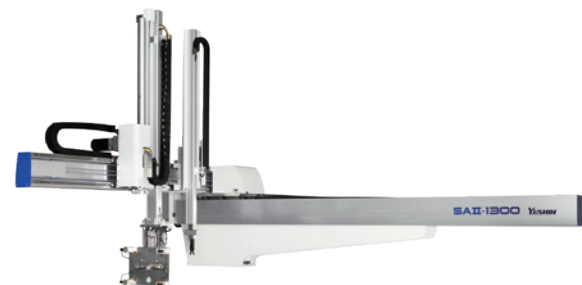
For Vertical  
Molding  
Machine

Stock System

Product  
Series  
Guide [P11]

## SA II -1000S/D, SA II -1300S/D

No need for adjustment of the molding machine  
High cost efficiency and usability in low overhead clearance spaces  
make for easy installation



Clamping force 1000 - 1600 tf

LOW Low posture  
(Double speed mechanism)

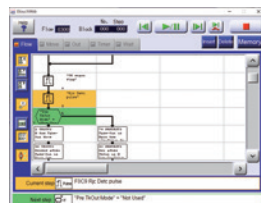
All-axis  
servo-driven

### Servo-driven take-out robot with excellent cost efficiency

The SA series is a practical and ideal choice for manufacturers that need robots that perform simple applications with high cost efficiency. A double-speed mechanism in the take-out arm enables the robot to be installed on low-clearance work floors.

### Lead Through Teaching equipped standard

Operators can add take-out robot motion while going through one-cycle operation of motion points and timers just like when teaching. This function gives operators the ability to add positions and teach motions to the robot.



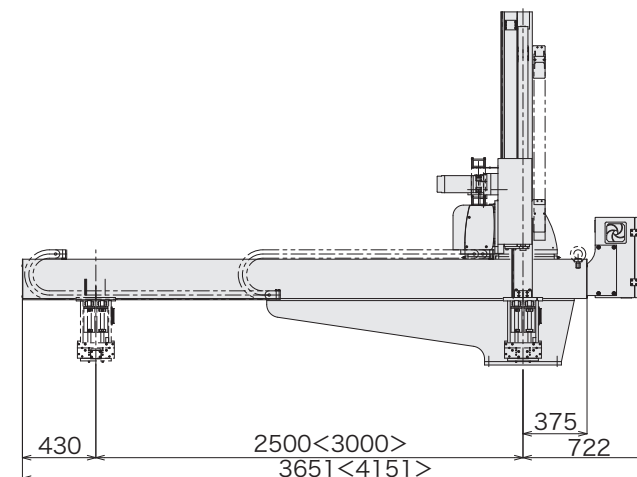
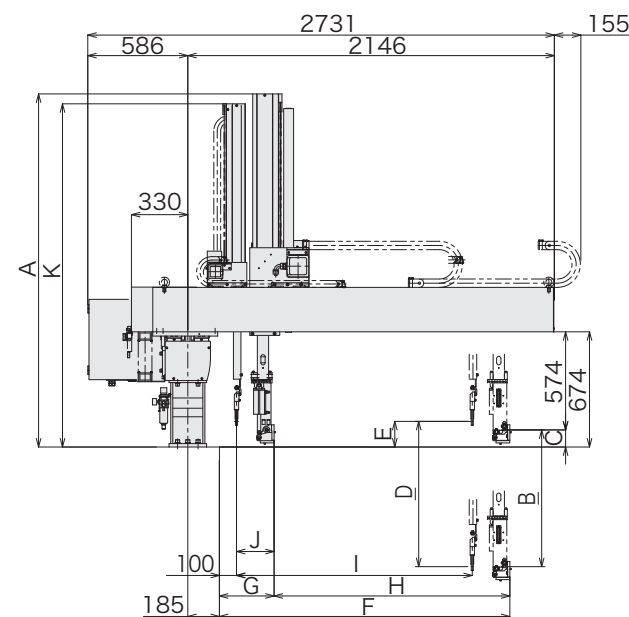
#### Standard Specifications

Power supply		Drive method		Controller model		Working air pressure		Flip angle	
200 VAC 50/60Hz		Digital servo motor 3/5-axis		E-touch Lite II		0.49MPa		90°	
Model	Power consumption	Traverse stroke [mm]	Kick stroke [mm]		Vertical stroke [mm]		Air consumption [NL/cycle]	Payload [kg]	Target IMM clamp capacity [tf]
			Main arm	Sub arm	Main arm	Sub arm			
SAII-1000S	3 phase S type 3.2kVA 200 VAC 9.3A	2500	1520	—	1800	—	40	25	1000-1300
SAII-1000D			1380	1380		1850			
SAII-1300S	D type 4.3kVA 200 VAC 12.3A	3000	1520	—	1800 (2000)	—	45	25	1300-1600
SAII-1300D			1380	1380		1850 (2050)			

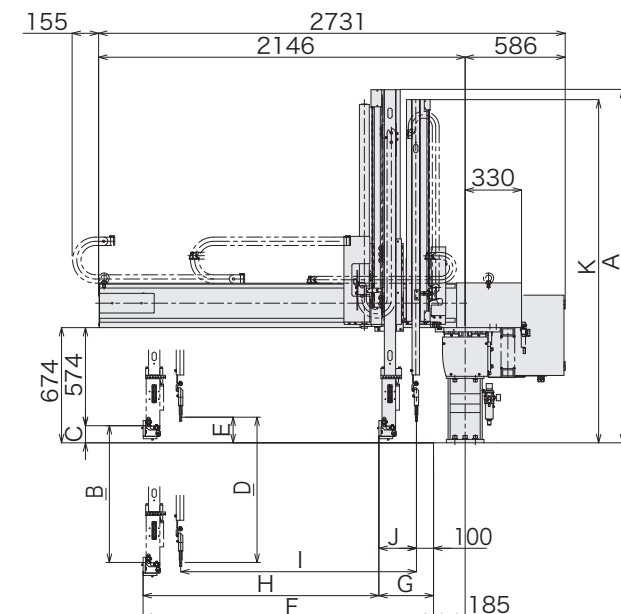
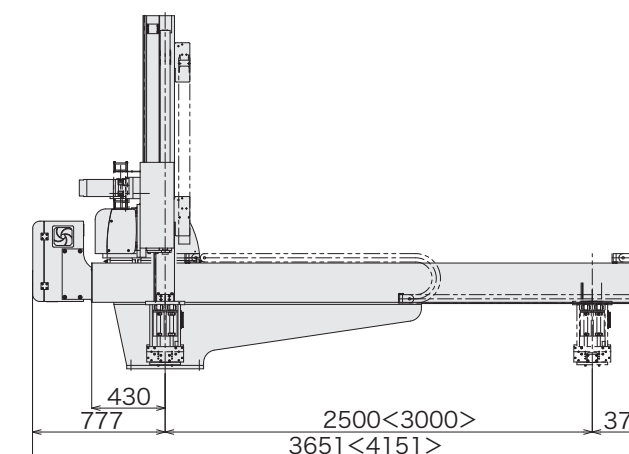
S type : Robot is equipped with product take-out arm only. D type : Robot is equipped with product take-out arm and runner take-out arm.

( ) : Modified stroke  
Payload includes the end-of-arm tool.

#### Rear (Non-operator) Side Discharge Direction (mm)



#### Operator Side Discharge Direction (mm)



[mm]

Model	A	B	C	D	E	F
SAII-1000S	2066	1800	100	—	—	1700
SAII-1000D				1850	150	
SAII-1300S	2066 (2170)	1800 (2000)		—	—	
SAII-1300D				1850 (2050)	150	

Model	G	H	I	J	K
SAII-1000S	180	1520	—	—	—
SAII-1000D	320	1380	1380	220	2008
SAII-1300S	180	1520	—	—	—
SAII-1300D	320	1380	1380	220	2008 (2108)

( ) : Modified stroke  
< > : SAII-1300

SAII-1000S/D, SAII-1300S/D

All-Axis Servo Driven Type Take-Out Robot

All-Axis  
Servo Driven  
Type

Swing Type

Side Entry  
Type

For Vertical  
Molding  
Machine

Stock System

Product  
Series  
Guide [P11]