

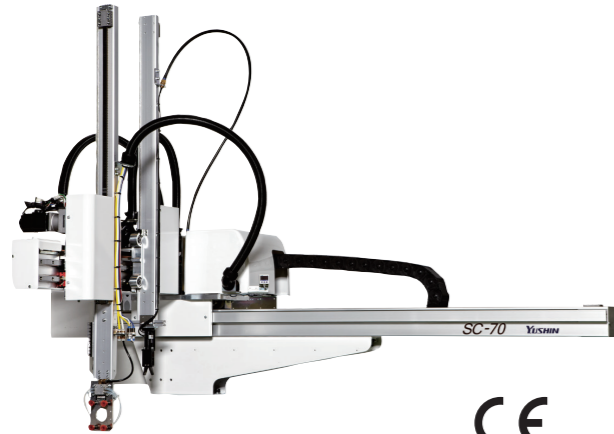
# 1 All-Axis Servo Driven Type Take-Out Robot

SC-70S/D

Separate catalog available

## SC-70S/D

No need for adjustment of the molding machine  
Providing energy savings and improved productivity with excellent cost efficiency



For CE supported languages, Please contact our sales department.

Clamping force 30 - 100tf

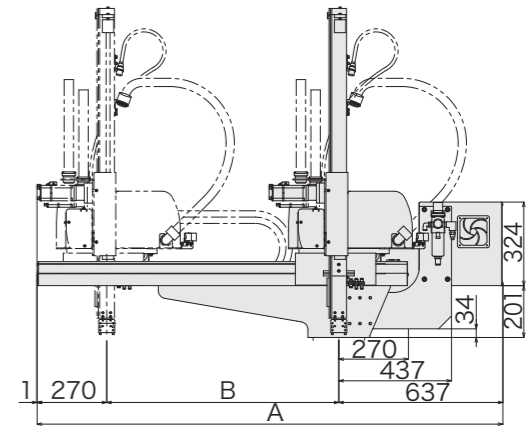
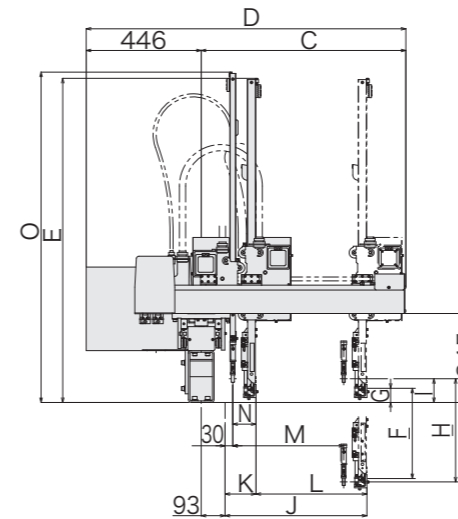
Economy

Vibration control

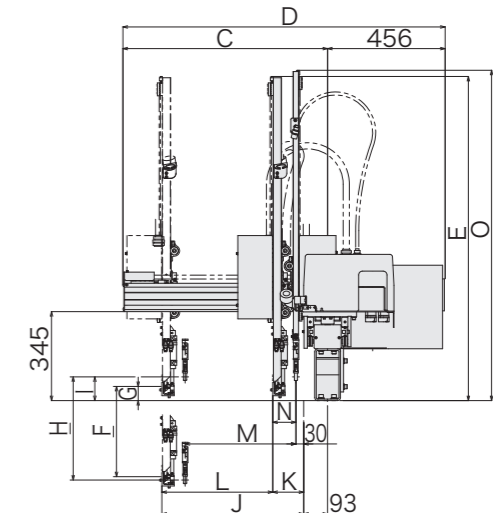
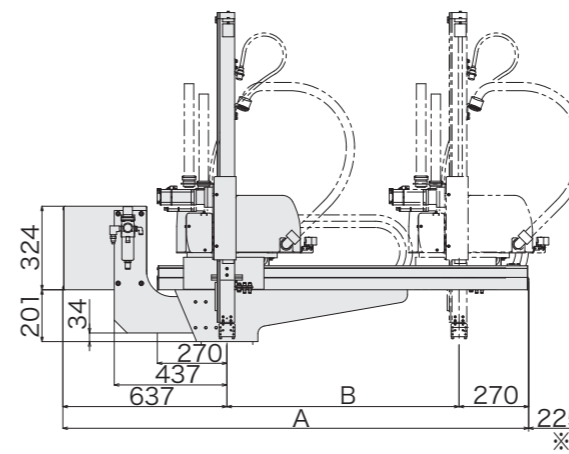
Optimized design + Power-saving

All-axis servo-driven

■ Rear (Non-operator) Side Discharge Direction (mm)



■ Operator Side Discharge Direction (mm)



### Economically Reduces Operating Costs and Increases Productivity

This series comes with the ECO Vacuum function to reduce air consumption, ECO mode\* that allows the robot to run using less power, and an ECO Monitor that displays the robot's air and power consumption in real-time to help save energy on the work floor and to economically reduce operating costs.

### Equipped with E-touch Lite-SC as standard



- ECO Vacuum®
- ECO mode\*
- ECO Monitor®
- Lead Through Teaching

\* This mode automatically adjusts the traverse travel speed to meet the molding cycle requirements while minimizing power consumption.

### ■ Standard Specifications

Power supply		Drive method		Controller model		Working air pressure		Flip angle	
200/220 VAC (50/60 Hz) Single phase		Digital servo motor 3/5-axis		E-touch Lite-SC		0.49MPa		90°	
Model	Power consumption	Traverse stroke (mm)	Kick stroke (mm)		Vertical stroke (mm)		Air consumption (NL/cycle)	Payload (kg)	Target IMM clamp capacity (tf)
			Main arm	Sub arm	Main arm	Sub arm			
SC-70S	S type 1.0kVA 200 VAC 5.0A	900 (1200) (1600)	470	—	(550) 650 (750)	(600) 700 (800)	1.7 (ECO Vacuum Specification)	3	30-100
SC-70D	D type 1.3kVA 200 VAC 6.5A		430	430					

S type : Robot is equipped with product take-out arm only. D type : Robot is equipped with product take-out arm and runner take-out arm. ( ) : Modified stroke Payload includes the end-of-arm tool.

(mm)

Model	A	B	C	D		E	F	G
				Operator Side Discharge Direction	Rear (Non-operator) Side Discharge Direction			
SC-70S	1807 (2107)	900 (1200)	795	1251	1241	(1157) 1257 (1357)	(550) 650 (750)	55
SC-70D	(2507)	(1600)						
Model	H	I	J	K	L	M	N	O
SC-70S	—	—	—	80	470	—	—	—
SC-70D	(600) 700 (800)	92	550	120	430	430	90	(1181) 1281 (1281)

( ) : Modified stroke  
\* : Reference values

SC-70S/D

All-Axis Servo Driven Type Take-Out Robot