

All-Axis
Servo Driven
Type

Swing Type

Side Entry
Type

For Vertical
Molding
Machine

Stock System

Product
Series
Guide [P11]

SVR-C50

High-speed product take-out & insert placement robot for vertical molding machines

Now available in a space-saving, compact design



* Picture shows the L type, which has the entry arm on the left side of the main unit, looking from the molding machine

Clamping force - 50tf (- 150tf)

High speed

Compact design

All-axis servo-driven

Adoption of Double-Speed Mechanism on Traverse Axis

A double-speed mechanism with two-stage slide is used on the take-out arm. This mechanism removes the projection of the arm and makes the robot more compact and saves space.

High Rigidity

This robot, including its arm, is designed to be highly rigid for insert molding, which requires high precision.

Use of the Thin-Type Arm

The arm of this robot can enter even narrow mold openings.

High-Speed Operation

This robot achieves a 1.53-second* dry cycle time for processes including workpiece placement and product take-out in insert molding.

* Based on dry cycle time measurement conditions specified by Yushin.

E-touch Lite II

- 7.5-inch full-color touch screen
- Lead Through Teaching equipped standard



Standard Specifications

Power supply	Drive method	Controller model	Working air pressure	Flip angle		
				Insert system specifications	Runner take-out specifications	
200/220 VAC (50/60 Hz) Single phase	Digital servo motor (2-axis)	E-touch Lite II	0.49MPa	—	180°	
Model	Power consumption	Traverse stroke [mm]	Vertical stroke [mm]	Air consumption [NL/cycle]	Payload [kg]	Target IMM clamp capacity [tf]
SVR-C50 [Insert system specifications]	1.1 kVA 200 VAC 5.3 A	700	200	33.3 (for 2 vacuum line)	5	-50
SVR-C50 [Runner take-out specifications]		450	200	0.1	1	-150

Payload includes the end-of-arm tool.

○ Type L : Main unit is on left side of arm. Type R : Main unit is on the right side of arm.

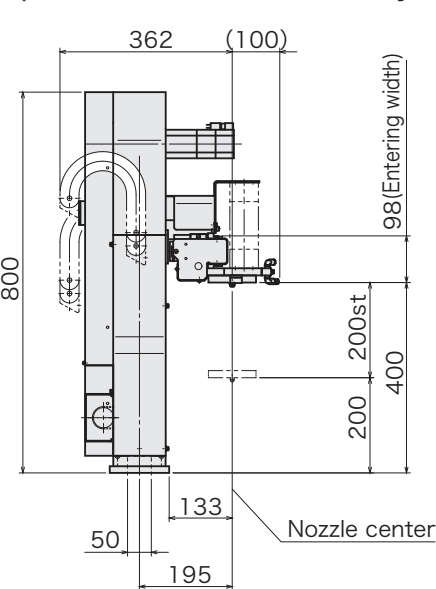
Separate catalog available

Options

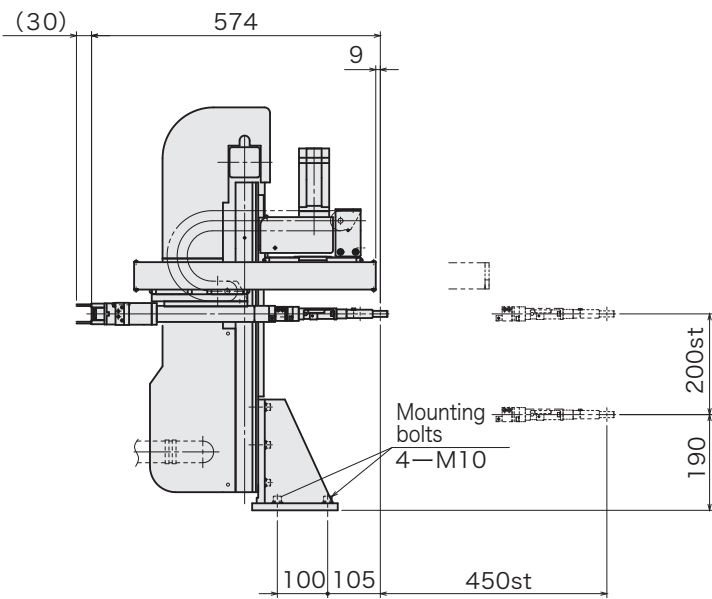
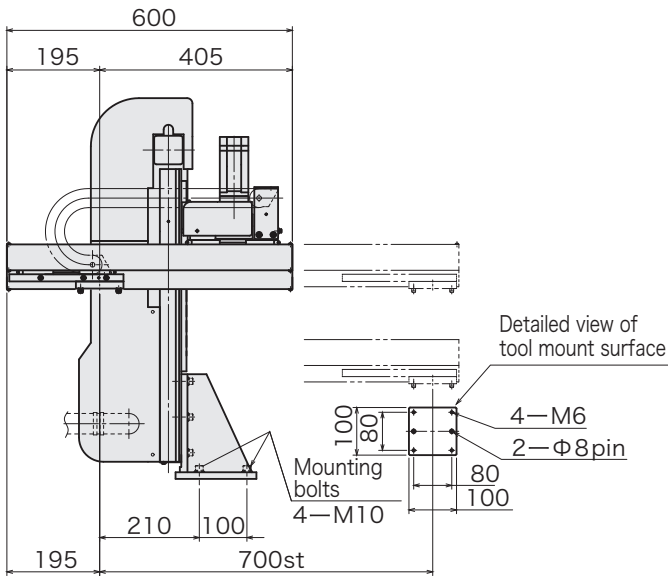
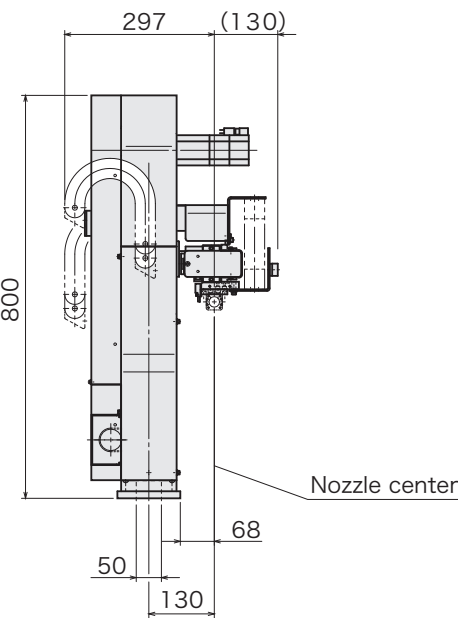
Options	Explanation of each option
Additional product grip circuits	1 or 2 circuits can be added to the product chuck circuit (2 circuits) provided in the standard specifications, for up to 4 circuits in total.
Additional vacuum circuit	Expansion is possible up to 4 vacuum circuits.
Signal light	Colored lights indicate the status of the take-out robot. One layer only (yellow).
Initial shots discharge motion	When automatic operation starts, a specified number of products are compulsorily released at a position different from that for good products.
Sampling motion	During automatic operation, products are released to a sample release position after each specified number of shots.
Confirmation of ejector retreat limit	When this option is selected, the arm of the take-out robot retreats after checking for the ejector pins retreat signal in order to prevent collision between the end-of-arm tool and ejector pins.

We offer an assortment of options. Please inquire with your local Yushin sales representative for details.

* Figure shows the L type
(Product take-out and insert system)



(Runner take-out)



All-Axis
Servo Driven
Type

Swing Type

Side Entry
Type

For Vertical
Molding
Machine

Stock System

Product
Series
Guide [P11]

For Vertical Molding Machine