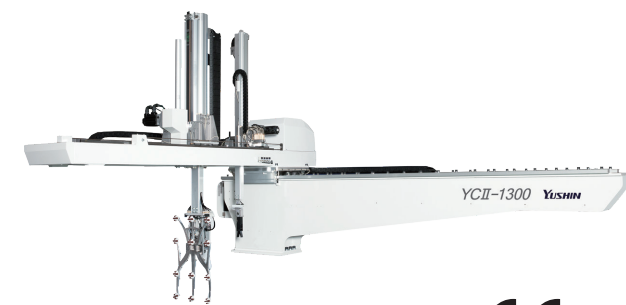


# 1 All-Axis Servo Driven Type Take-Out Robot

YCII-1300S/D

## YC II -1300S/D

Lightweight, vibration-resistant, power-saving models now support easy introduction in low-clearance installations



For CE supported languages,  
Please contact our sales  
department.

Clamping force 1000 - 1600tf

Standard

Vibration control

Optimized design  
+ Power-saving

Low posture  
(Double speed mechanism)

All-axis  
servo-driven

### All-Axis Servo Driven Take-Out Robot for Energy-Smart Manufacturers

YC series robots benefit from much lighter components and structures by incorporating design optimization technology. This weight reduction results in significantly better energy efficiency and longevity. Design optimization also targeted factors like natural oscillation and damping characteristics to greatly reduce arm vibration. The YCII-1300 models are sized for molding machines with clamping forces from 1000 to 1600 tf.

### Equipped with E-touch compact-YC as standard



- ECO Vacuum®
- ECO Monitor®
- Predictive Maintenance\*

\* Continuously monitors take-out robot during operation and alerts operator with a message if any signs of potential trouble are detected.

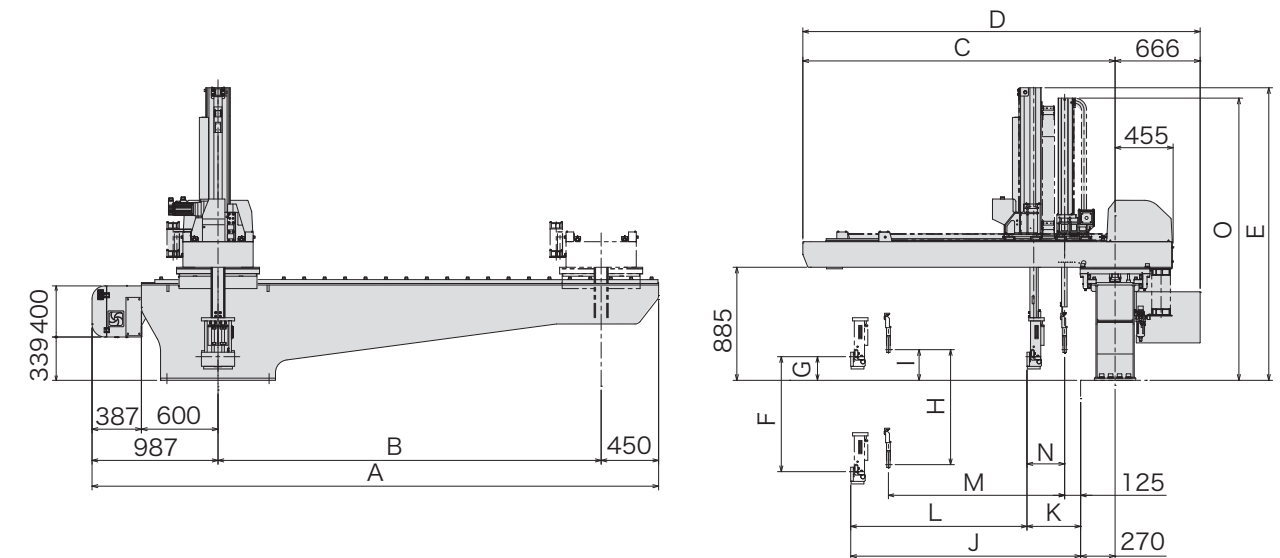
#### Standard Specifications

Power supply		Drive method		Controller model		Working air pressure		Flip angle	
200/220 VAC (50/60 Hz) 3 phase		Digital servo motor 3/5-axis		E-touch compact-YC		0.49MPa		90°	
Model	Power consumption	Traverse stroke (mm)	Kick stroke (mm)		Vertical stroke (mm)		Air consumption (NL/cycle)	Payload (kg)	Target IMM clamp capacity (tf)
			Main arm	Sub arm	Main arm	Sub arm			
YCII-1300S	2.5 kVA 200 VAC 9.1 A	3000 (3500)	1570	—	1800 (2100)	—	47.0 (ECO Vacuum OFF)	35	1000-1600
YCII-1300D	3.4 kVA 200 VAC 13.8 A		1380	1380		1800 (2100)	35.0 (ECO Vacuum ON)		

S type : Robot is equipped with main arm only. D type : Robot is equipped with main arm and sub arm.  
( ) : Modified stroke

Payload includes the end-of-arm tool.

Separate catalog available



(mm)

Model	A	B	C	D	E	F	G	H	I	J	K	L	M	N	O
YCII-1300S	4437 (4937)	3000 (3500)	2447	3113	2290 (2440)	1800 (2100)	185	—	—	1800	230	1570	—	—	—
YCII-1300D								1800 (2100)	240		420	1380	1380	295	2210 (2446)

( ) : Modified stroke

### Introducing our Robot Tooling and Accessory Guide (EOAT Parts Catalog)

What are you looking for in end-of-arm tools?

- Make new tools
- Make tool exchanges more efficient
- Modifying or repairing parts



Yushin has the solution for you.

