

# 1 All-Axis Servo Driven Type Take-Out Robot

YCII-70S/D

Separate catalog available

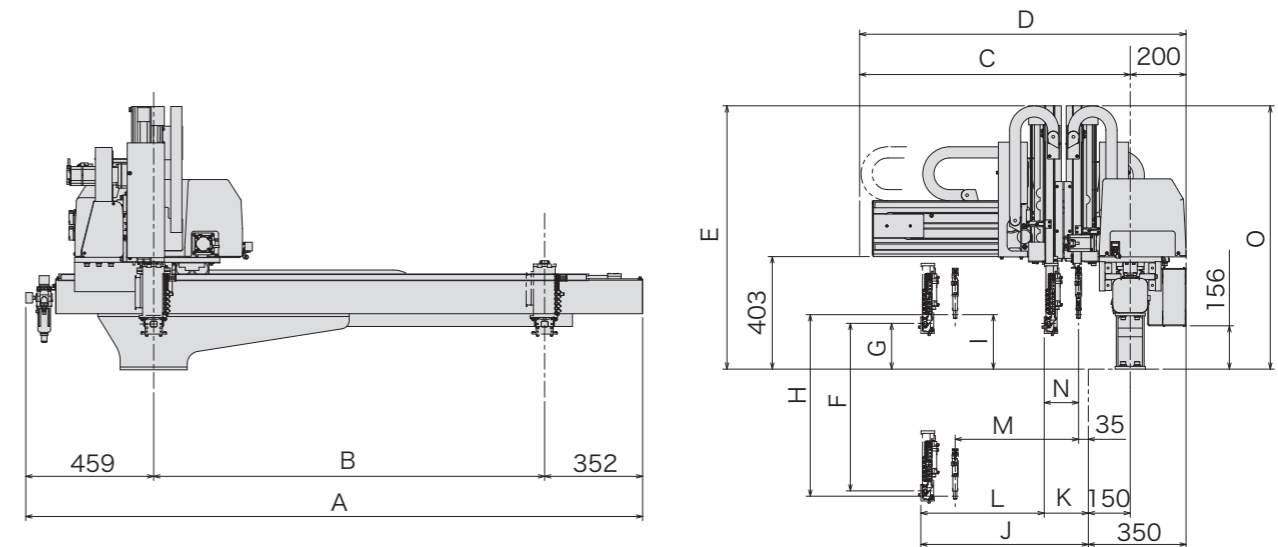
## YC II -70S/D

Lightweight, vibration-resistant, power-saving models now support easy introduction in low-clearance installations

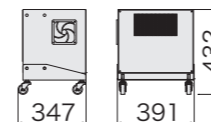


For CE supported languages. Please contact our sales department.

- Clamping force 30 - 80 tf
- Standard
- Vibration control
- Optimized design + Power-saving
- Low posture (Double speed mechanism)
- All-axis servo-driven



### Control Box (mm)



(mm)

Model	A	B	C	D	E	F	G	H	I	J	K	L	M	N	O
YCII-70S	1910 (2210)	1100 (1400)	969	1169	943 (999)	600 (700)	164	—	—	600	100	500	—	—	—
YCII-70D	(2510)	(1700)						650 (750)	195		158	442	442	123	943 (999)

( ) : Modified stroke

### All-Axis Servo Driven Take-Out Robot for Energy-Smart Manufacturers

YC series robots benefit from much lighter components and structures by incorporating design optimization technology. This weight reduction results in significantly better energy efficiency and longevity. Design optimization also targeted factors like natural oscillation and damping characteristics to greatly reduce arm vibration. The YCII-70 is sized for molding machines with clamping forces from 30 to 80 tf.

### Equipped with E-touch compact-YC as standard



- ECO Vacuum®
- ECO Monitor®
- Predictive Maintenance\*

\* Continuously monitors take-out robot during operation and alerts operator with a message if any signs of potential trouble are detected.

### Standard Specifications

Power supply		Drive method		Controller model		Working air pressure		Flip angle	
200/220 VAC (50/60 Hz) Single phase		Digital servo motor 3/5-axis		E-touch compact-YC		0.49MPa		90°	
Model	Power consumption	Traverse stroke (mm)	Kick stroke (mm)		Vertical stroke (mm)		Air consumption (NL/cycle)	Payload (kg)	Target IMM clamp capacity (tf)
			Main arm	Sub arm	Main arm	Sub arm			
YCII-70S	1.4 kVA 200 VAC 7.0 A	1100 (1400) (1700)	500	—	600 (700)	—	3.2 (ECO Vacuum OFF)	3	30-80
YCII-70D	1.9 kVA 200 VAC 9.5 A		442	442	650 (750)	1.0 (ECO Vacuum ON)			

S type : Robot is equipped with main arm only. D type : Robot is equipped with main arm and sub arm.

( ) : Modified stroke

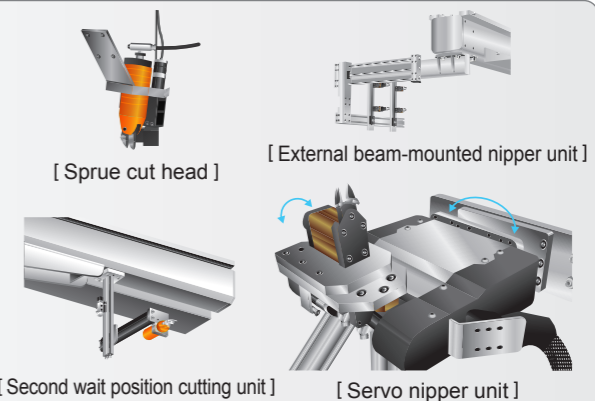
Payload includes the end-of-arm tool.

### We provide solutions to your unique cutting needs

Yushin offers different options for cutting gates, sprues, and runners. A variety of cutting options are available, including nipper units and other precision cutting units.

### Features

We have a selection of installations that cater to your needs, including the full range from rough cutting to precision cutting with quality cutting surfaces and efficient operation that minimizes the impact on cycle time.



YCII-70S/D

All-Axis Servo Driven Type Take-Out Robot