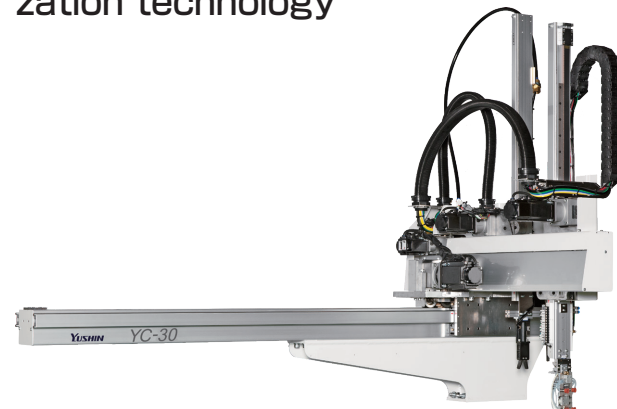


# 1 All-Axis Servo Driven Type Take-Out Robot

YC-30S/D

## YC-30S/D

Energy-saving model featuring optimized air suction along with lighter weight and improved vibration resistance thanks to design optimization technology



Clamping force 60tf or less

Standard

Vibration control

Optimized design + Power-saving

All-axis servo-driven



For CE supported languages, Please contact our sales department.

### All-Axis Servo Driven Take-Out Robot for Energy-Smart Manufacturers

YC series robots benefit from much lighter components and structures by incorporating design optimization technology. This weight reduction results in significantly better energy efficiency and longevity. Design optimization also targeted factors like natural oscillation and damping characteristics to greatly reduce arm vibration. The smallest model in the YC series lineup, the YC-30 is sized for the smallest molding machines with a clamping force of 60 tf or less and is optimal for taking out small high-precision products.

### Equipped with E-touch compact-YC as standard



- ECO Vacuum®
- ECO Monitor®
- Predictive Maintenance\*

\* Continuously monitors take-out robot during operation and alerts operator with a message if any signs of potential trouble are detected.

#### Standard Specifications

Power supply		Drive method		Controller model		Working air pressure		Flip angle	
200/220 VAC (50/60 Hz) Single phase		Digital servo motor 3/5-axis		E-touch compact-YC		0.49MPa		90°	
Model	Power consumption	Traverse stroke (mm)	Kick stroke (mm)		Vertical stroke (mm)		Air consumption (NL/cycle)	Payload (kg)	Target IMM clamp capacity (tf)
			Main arm	Sub arm	Main arm	Sub arm			
YC-30S	1.9 kVA 200 VAC 9.3 A	900 (1200) *(1600)	320 *(470)	—	450 (550)	—	2.3 (ECO Vacuum OFF)	2	60 or less
YC-30D	2.2 kVA 200 VAC 10.8 A		280 *(430)	280 *(430)	550 (650)	550 (650)	0.8 (ECO Vacuum ON)		

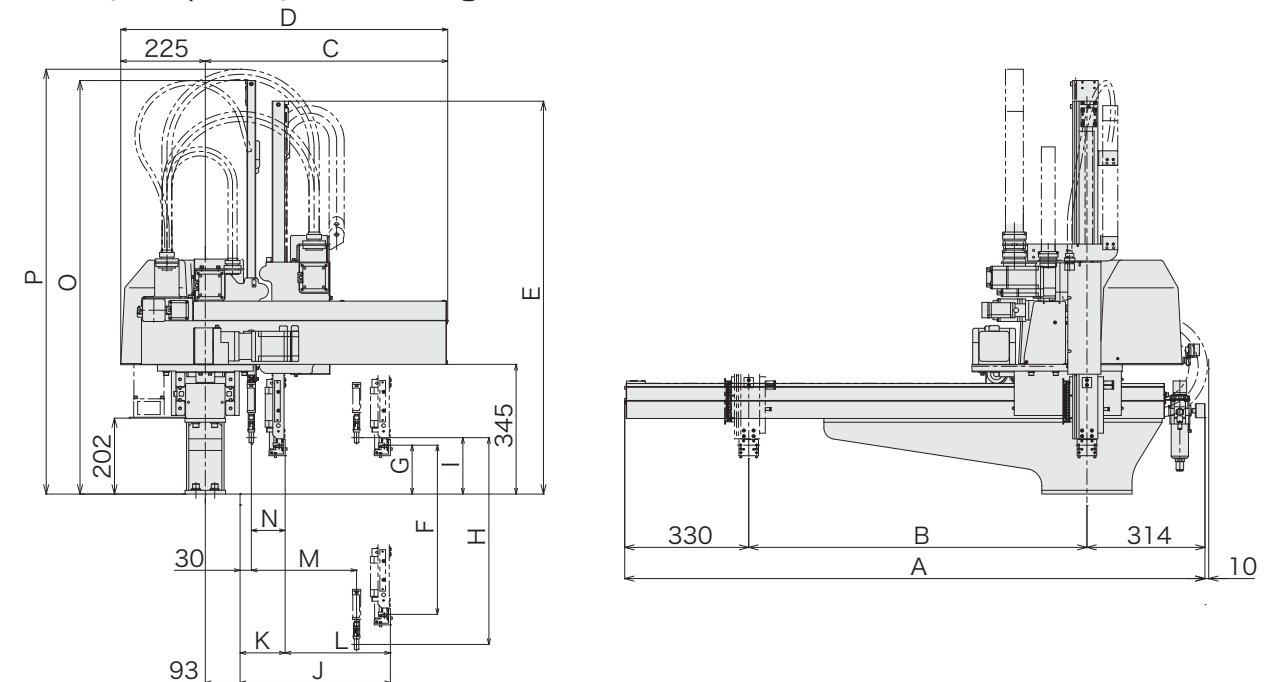
S type : Robot is equipped with main arm only. D type : Robot is equipped with main arm and sub arm.

( ) : Modified stroke

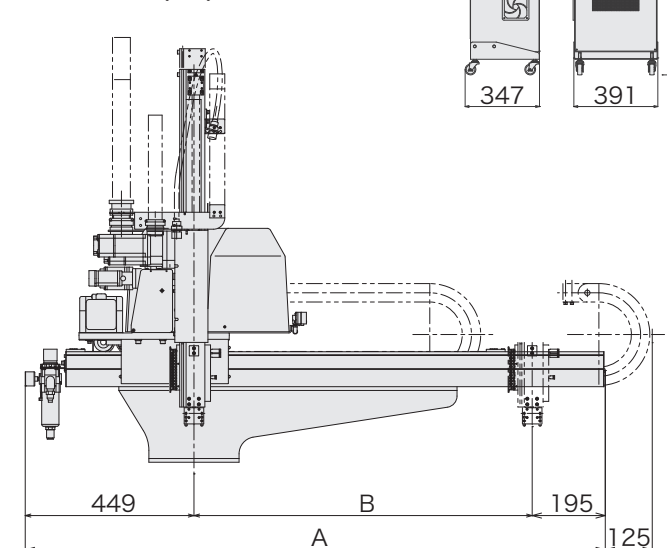
Payload includes the end-of-arm tool.

\* Kick stroke dimensions are modified to the size in \*( ) when a model with modified traverse stroke of 1600 mm is selected.

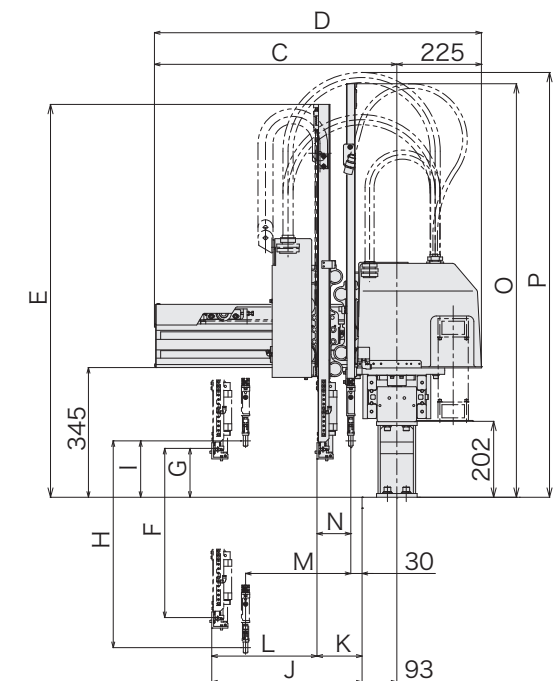
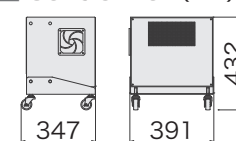
#### Rear (Non-operator) Side Discharge Direction (mm)



#### Operator Side Discharge Direction (mm)



#### Control Box (mm)



(mm)

Model	A	B	C	D	E	F	G	H
YC-30S	1544 (1844) (2244)	900 (1200) (1600)	645 (795)	870 (1020)	1045 (1145)	450 (550)	130	—
YC-30D								550 (650)

Model	I	J	K	L	M	N	O	P*
YC-30S	—	400 (550)	80	320 (470)	—	—	1100 (1200)	(1130)
YC-30D	150		120	280 (430)	280 (430)	90		(1110)

( ) : Modified stroke

\* For modified kick stroke

Separate catalog available

All-Axis Servo Driven Type

Single-Axis Servo Driven Type

Swing Type

Side Entry Type

For Vertical Molding Machine

Stock System

Product Series Guide [P11]

All-Axis Servo Driven Type Take-Out Robot