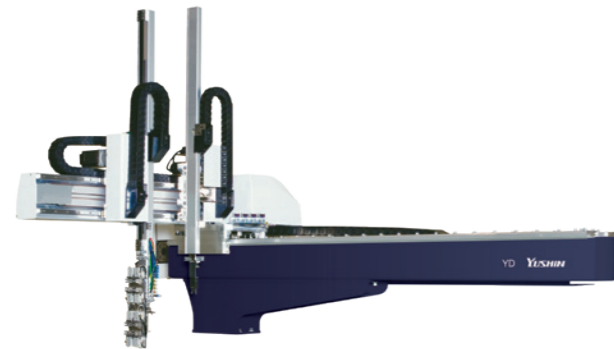


Separate catalog available

YD-1025S/D, YD-2535S/D

Enhanced design for higher productivity, less downtime, and lighter environmental footprint.



Clamping force 100 - 350 tf

Vibration control

Optimized design + Power-saving

All-axis servo-driven



For CE supported languages, please contact our sales department.

All-Axis Servo Driven Take-out Robot Enhancing Customer Profitability and Environmental Measures

Combining design optimization, CFRPv3, and vibration control contribute to shorter cycle time and stable take-out. We have refined our unique ECO Vacuum™ technology to reduce compressed air consumption even further. As a result, robot air consumption can be economized and can reduce capital expenditures. The YD-1025/2535 is sized for molding machines with clamping forces from 100 to 350 tf.

Equipped with E-touch compact 3 as standard



- Smart ECO Vacuum
- Take-out Diagnosis Function
- Torque Monitoring during Manual Operation

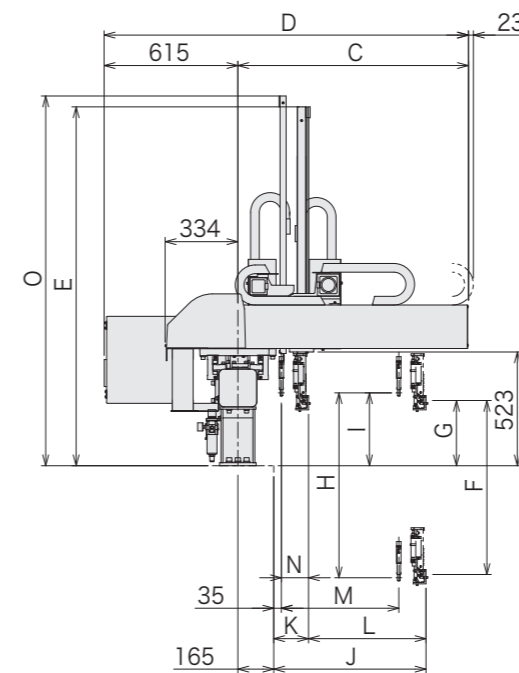
The E-touch compact 3 takes the easy operability of the previous YC series controller. And several assist features to become even easier to use.

Standard Specifications

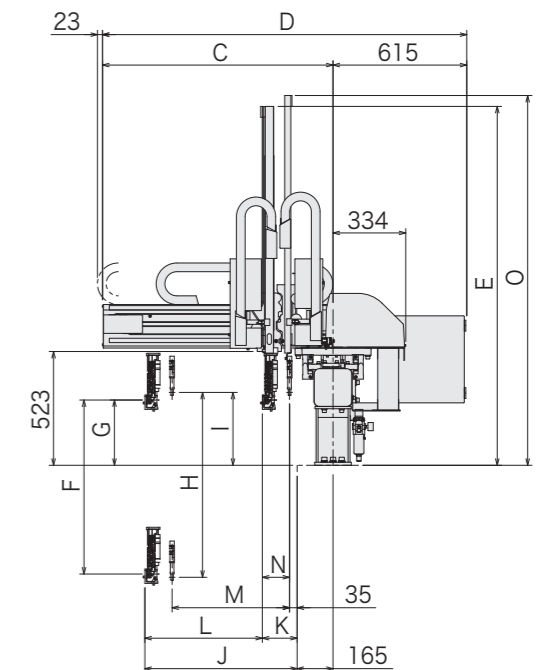
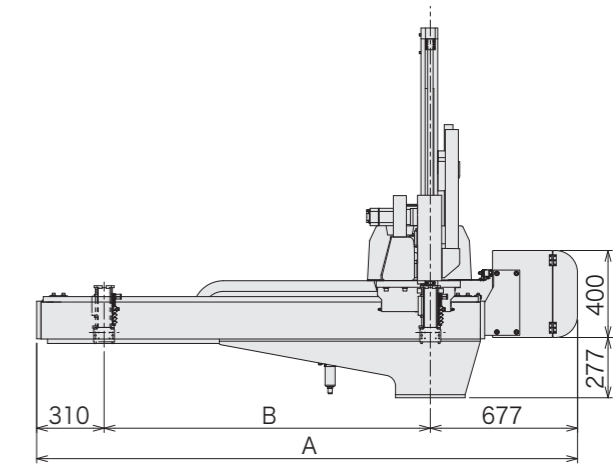
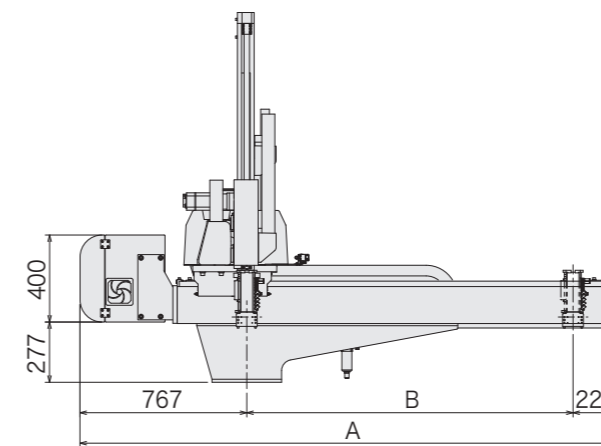
Model	Power consumption	Traverse stroke [mm]	Kick stroke [mm]		Vertical stroke [mm]		Air consumption [NL/cycle]	Payload [kg]	Target IMM clamp capacity [tf]	
			Main arm	Sub arm	Main arm	Sub arm				
YD-1025S	S type 1.9 kVA 200 VAC 9.3 A	(1100) 1500 (1700) (1900) (2200) (2500)	625	—	(650) 800 (900)	—	3.5 Smart ECO Vacuum OFF	5 (8)	100-250	
YD-1025D			540	540	(700) 850 (950)	—	1.2 Smart ECO Vacuum ON			
YD-2535S	D type 2.5 kVA 200 VAC 12.3 A	(1100) 1500 (1700) (1900) (2200) (2500)	775	—	900 (1050)	—	3.9 Smart ECO Vacuum OFF			250-350
YD-2535D			690	690	950 (1100)	—	1.4 Smart ECO Vacuum ON			

S type : Robot is equipped with main arm only. D type : Robot is equipped with main arm and sub arm.
() : Modified stroke () : Increased maximum payload
Payload includes the end-of-arm tool.

■ Rear (Non-operator) Side Discharge Direction (mm)



■ Operator Side Discharge Direction (mm)



[mm]

Model	A	B	C	D	E	F	G	H	I	J	K	L	M	N	O
YD-1025S					(1498) 1650 (1754)	(650) 800 (900)		—	—		75	625	—	—	—
YD-1025D	(2087) 2487 (2687) (2887) (3187) (3487)	(1100) 1500 (1700) (1900) (2200) (2500)	1060	1675			300	(700) 850 (950)	335	700	160	540	540	125	(1548) 1700 (1804)
YD-2535S					1754 (1906)	900 (1050)		—	—		75	775	—	—	—
YD-2535D			1210	1825				950 (1100)	335	850	160	690	690	125	1804 (1956)

() : Modified stroke